

GN 133 Two-way connecting clamps

Aluminium



MATERIAL

Aluminium, matte finish.
AISI 304 stainless steel screws and nuts.

STANDARD EXECUTIONS

Surface finish index:
- **BL**: natural colour.
- **SW**: epoxy resin coating resistant to UV rays, RAL 9005 black colour.

FEATURES AND APPLICATIONS

The assembly holes of GN 133 connecting clamps allow an excellent match with tubes GN 990 (see page 1368).

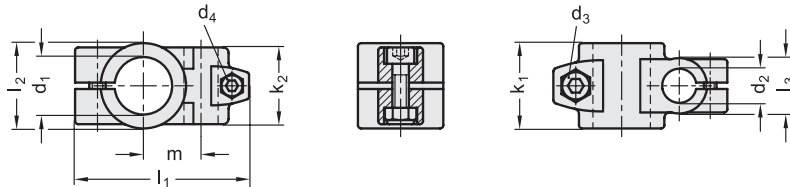
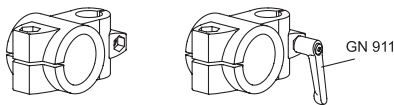
The clamping screw d3 may be replaced by clamping kit GN 911 (see page 1372).

SPECIAL EXECUTIONS ON REQUEST

Different combinations of holes d1/d2.



Conversion Table 1 mm = 0,039 inch	
d1	
mm	inch
20	0.78
25	0.98
30	1.17
40	1.56
42	1.64
45	1.76
48	1.87
50	1.95



Code BL	Code SW	Description	d1	d2	d3	d4	k1	k2	l1	l2	l3	m	d3 Clamping kit	d4 Clamping kit	⚖
GN.43111	GN.43116	GN 133-B20-B12-2-*	20	12	M8	M6	40	36	81.5	40	26	27	GN 911-M8-32	GN 911-M8-25	180
GN.43131	GN.43136	GN 133-B20-B14-2-*	20	14	M8	M6	40	36	81.5	40	26	27	GN 911-M8-32	GN 911-M8-25	174
GN.43151	GN.43156	GN 133-B20-B16-2-*	20	16	M8	M6	40	36	81.5	40	26	27	GN 911-M8-32	GN 911-M8-25	170
GN.43171	GN.43176	GN 133-B20-B18-2-*	20	18	M8	M6	40	36	81.5	40	26	27	GN 911-M8-32	GN 911-M8-25	170
GN.43191	GN.43196	GN 133-B25-B12-2-*	25	12	M8	M6	40	36	81.5	40	26	27	GN 911-M8-32	GN 911-M8-25	159
GN.43211	GN.43216	GN 133-B25-B14-2-*	25	14	M8	M6	40	36	81.5	40	26	27	GN 911-M8-32	GN 911-M8-25	155
GN.43231	GN.43236	GN 133-B25-B16-2-*	25	16	M8	M6	40	36	81.5	40	26	27	GN 911-M8-32	GN 911-M8-25	150
GN.43251	GN.43256	GN 133-B25-B18-2-*	25	18	M8	M6	40	36	81.5	40	26	27	GN 911-M8-32	GN 911-M8-25	147
GN.43271	GN.43276	GN 133-B30-B12-2-*	30	12	M8	M6	40	36	81.5	40	26	27	GN 911-M8-32	GN 911-M8-25	135
GN.43291	GN.43296	GN 133-B30-B14-2-*	30	14	M8	M6	40	36	81.5	40	26	27	GN 911-M8-32	GN 911-M8-25	128
GN.43311	GN.43316	GN 133-B30-B16-2-*	30	16	M8	M6	40	36	81.5	40	26	27	GN 911-M8-32	GN 911-M8-25	128
GN.43331	GN.43336	GN 133-B30-B18-2-*	30	18	M8	M6	40	36	81.5	40	26	27	GN 911-M8-32	GN 911-M8-25	124
GN.43351	GN.43356	GN 133-B40-B20-2-*	40	20	M10	M8	65	59	122	65	40	45	GN 911-M10-55	GN 911-M8-32	640
GN.43371	GN.43376	GN 133-B40-B25-2-*	40	25	M10	M8	65	59	122	65	40	45	GN 911-M10-55	GN 911-M8-32	601
GN.43391	GN.43396	GN 133-B40-B30-2-*	40	30	M10	M8	65	59	122	65	40	45	GN 911-M10-55	GN 911-M8-32	570
GN.43411	GN.43416	GN 133-B42-B20-2-*	42	20	M10	M8	65	59	122	65	40	45	GN 911-M10-55	GN 911-M8-32	600
GN.43431	GN.43436	GN 133-B42-B25-2-*	42	25	M10	M8	65	59	122	65	40	45	GN 911-M10-55	GN 911-M8-32	600
GN.43451	GN.43456	GN 133-B42-B30-2-*	42	30	M10	M8	65	59	122	65	40	45	GN 911-M10-55	GN 911-M8-32	600
GN.43471	GN.43476	GN 133-B45-B20-2-*	45	20	M10	M8	65	59	122	65	40	45	GN 911-M10-55	GN 911-M8-32	510
GN.43491	GN.43496	GN 133-B45-B25-2-*	45	25	M10	M8	65	59	122	65	40	45	GN 911-M10-55	GN 911-M8-32	510
GN.43511	GN.43516	GN 133-B45-B30-2-*	45	30	M10	M8	65	59	122	65	40	45	GN 911-M10-55	GN 911-M8-32	510
GN.43531	GN.43536	GN 133-B48-B20-2-*	48	20	M10	M8	65	59	122	65	40	45	GN 911-M10-55	GN 911-M8-32	475
GN.43551	GN.43556	GN 133-B48-B25-2-*	48	25	M10	M8	65	59	122	65	40	45	GN 911-M10-55	GN 911-M8-32	475
GN.43571	GN.43576	GN 133-B48-B30-2-*	48	30	M10	M8	65	59	122	65	40	45	GN 911-M10-55	GN 911-M8-32	475
GN.43591	GN.43596	GN 133-B50-B20-2-*	50	20	M10	M8	65	59	122	65	40	45	GN 911-M10-55	GN 911-M8-32	505
GN.43611	GN.43616	GN 133-B50-B25-2-*	50	25	M10	M8	65	59	122	65	40	45	GN 911-M10-55	GN 911-M8-32	480
GN.43631	GN.43636	GN 133-B50-B30-2-*	50	30	M10	M8	65	59	122	65	40	45	GN 911-M10-55	GN 911-M8-32	450

Connecting clamps

* Complete the description of the standard item needed by adding the finish of the connector clamps: BL (blank) or SW (black).